

MG4 - SWI68-29958-1300RXX FICM upgrade instructions

*Versions up to R59 included the MCU in the archives similar to SWI69
From R63, MCU is no longer in the archives and needs to be updated using SIPS*

Section 1 – USB Preparation

1.1 Unzip the MG4 Rxx update file

Download archives from [here](#)

1.2 Copy the contents of the unzipped file to the root of a USB memory stick with a minimum capacity of 2GB and formatted as FAT32

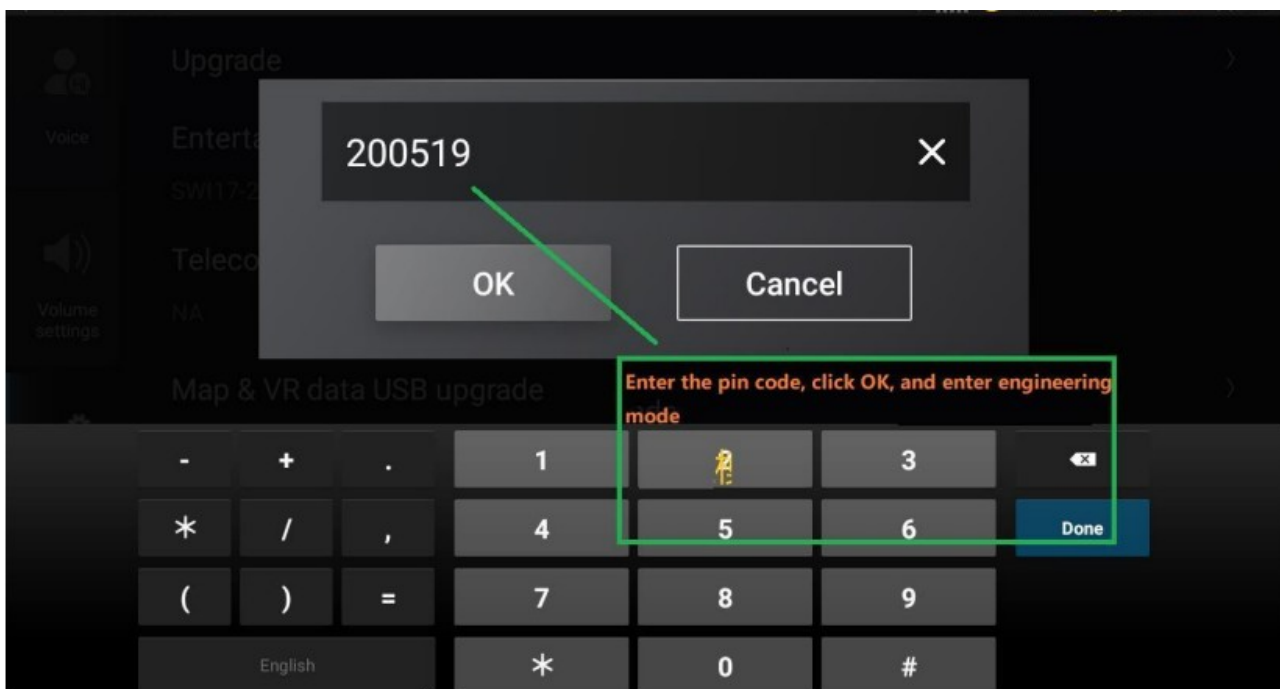
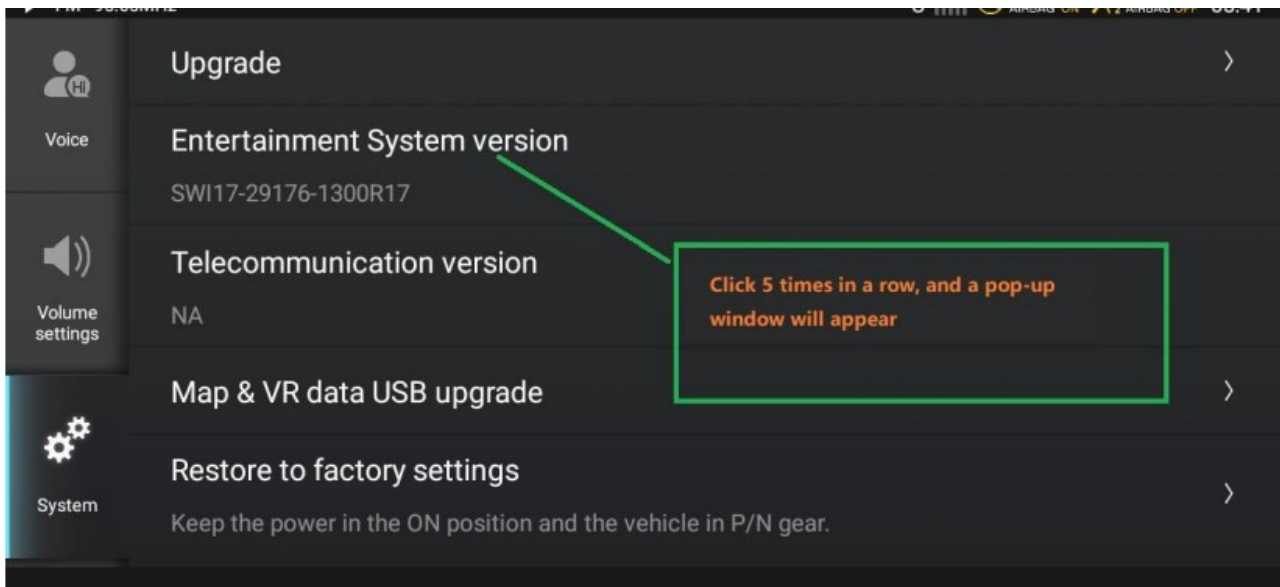


Section 2 – MPU upgrade

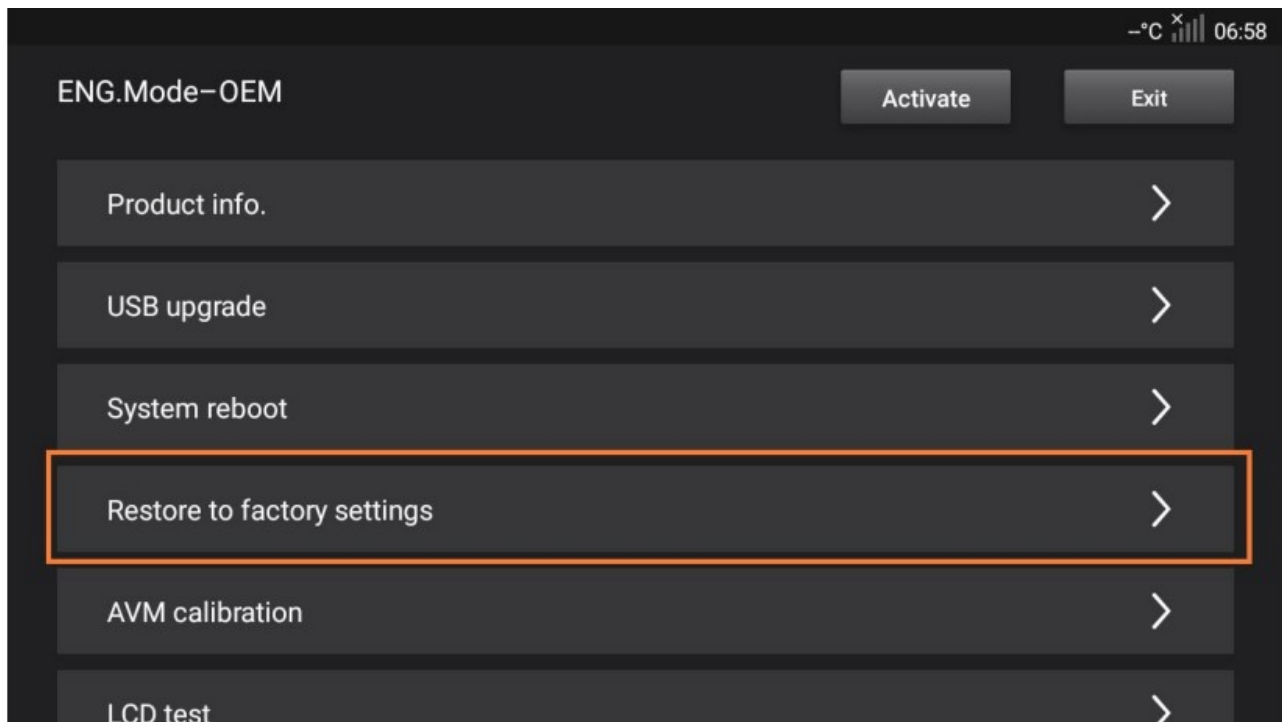
2.1 Insert the USB drive with the upgrade package into the USB port of the car



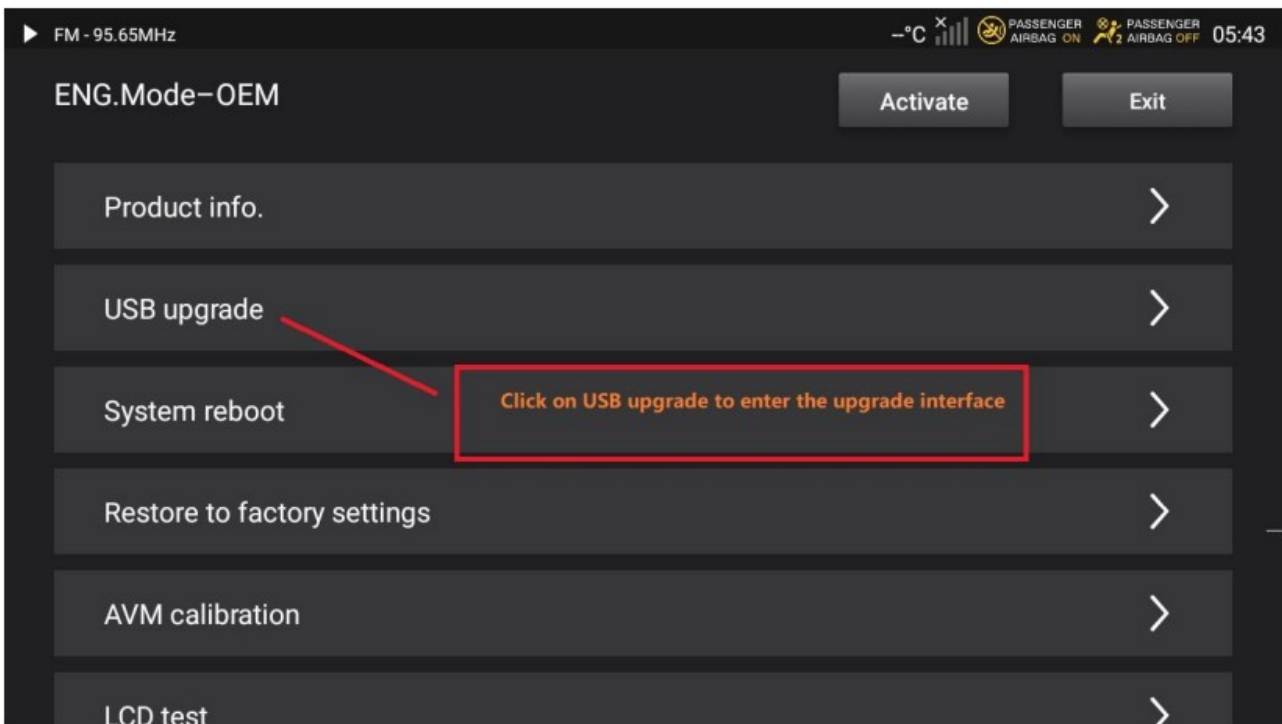
2.2 Go to [Settings]-> [System] -> click on the software version number 5 times in a row, enter 200519 in the pop-up dialog box, and click the OK button to enter engineering mode

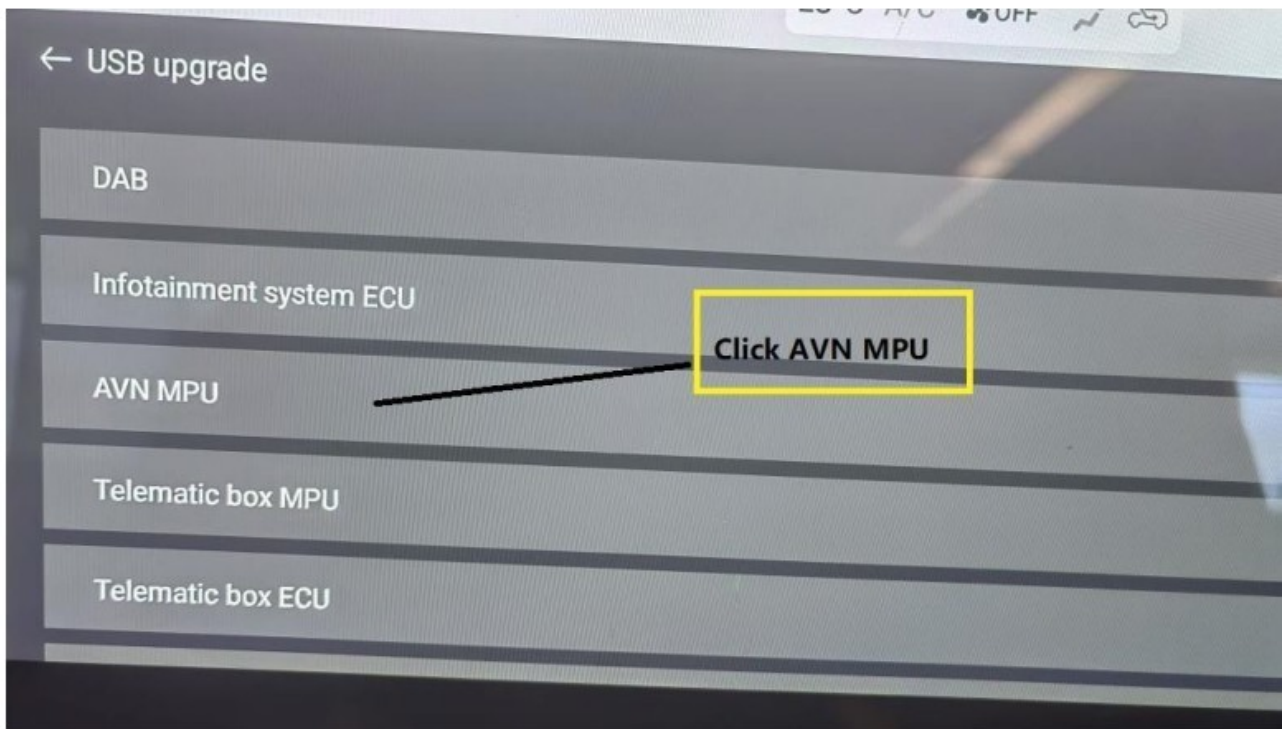


2.3 Before upgrading the MPU, do a factory reset and restart

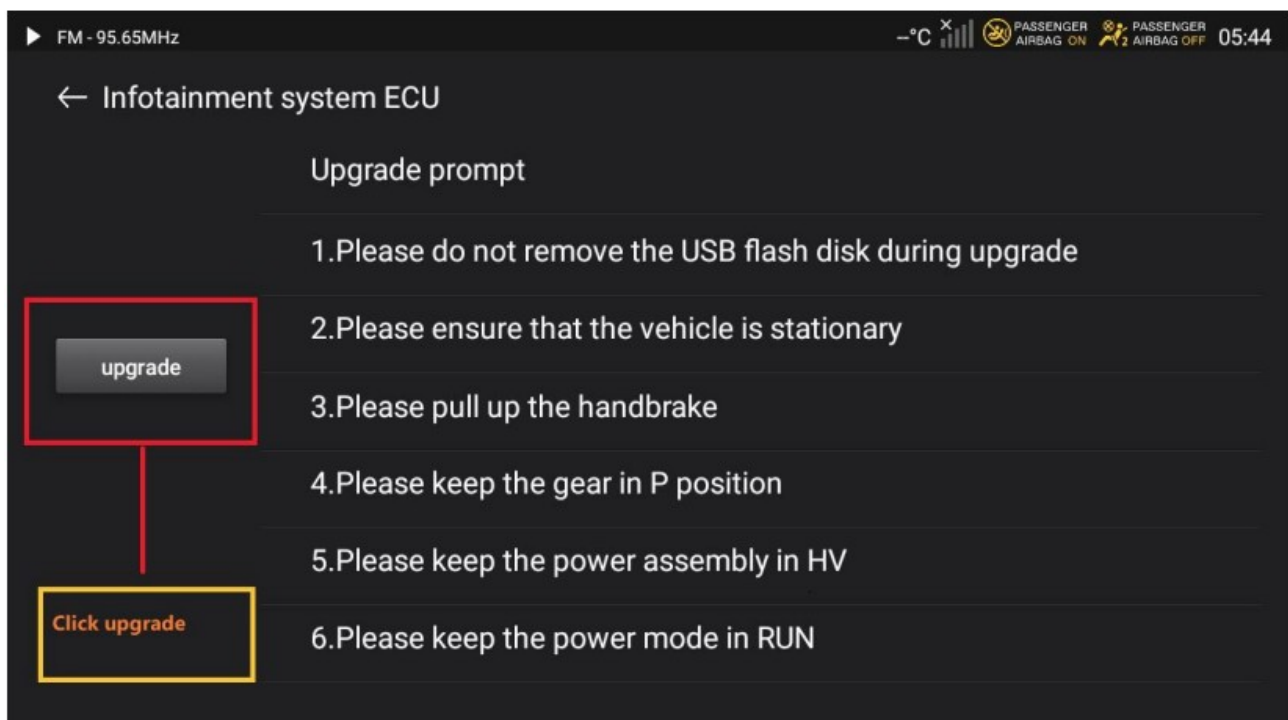


2.4 After restore and restart, enter the engineering mode again, click [USB upgrade] to enter the USB upgrade interface and click [AVN MPU] to enter the MPU upgrade interface

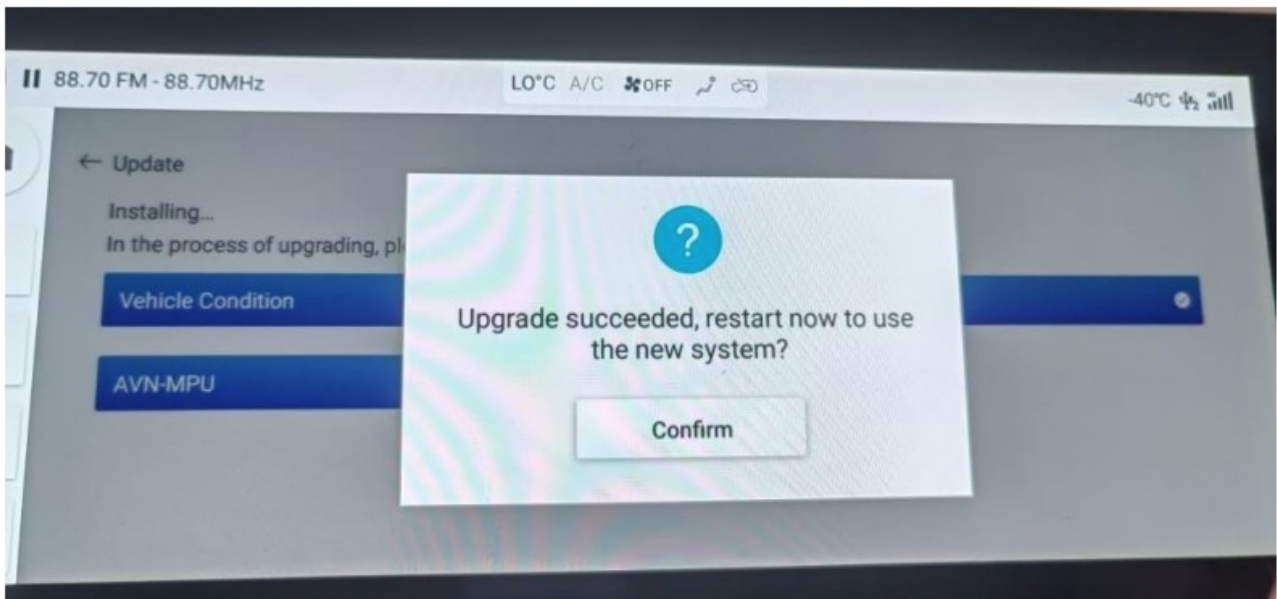




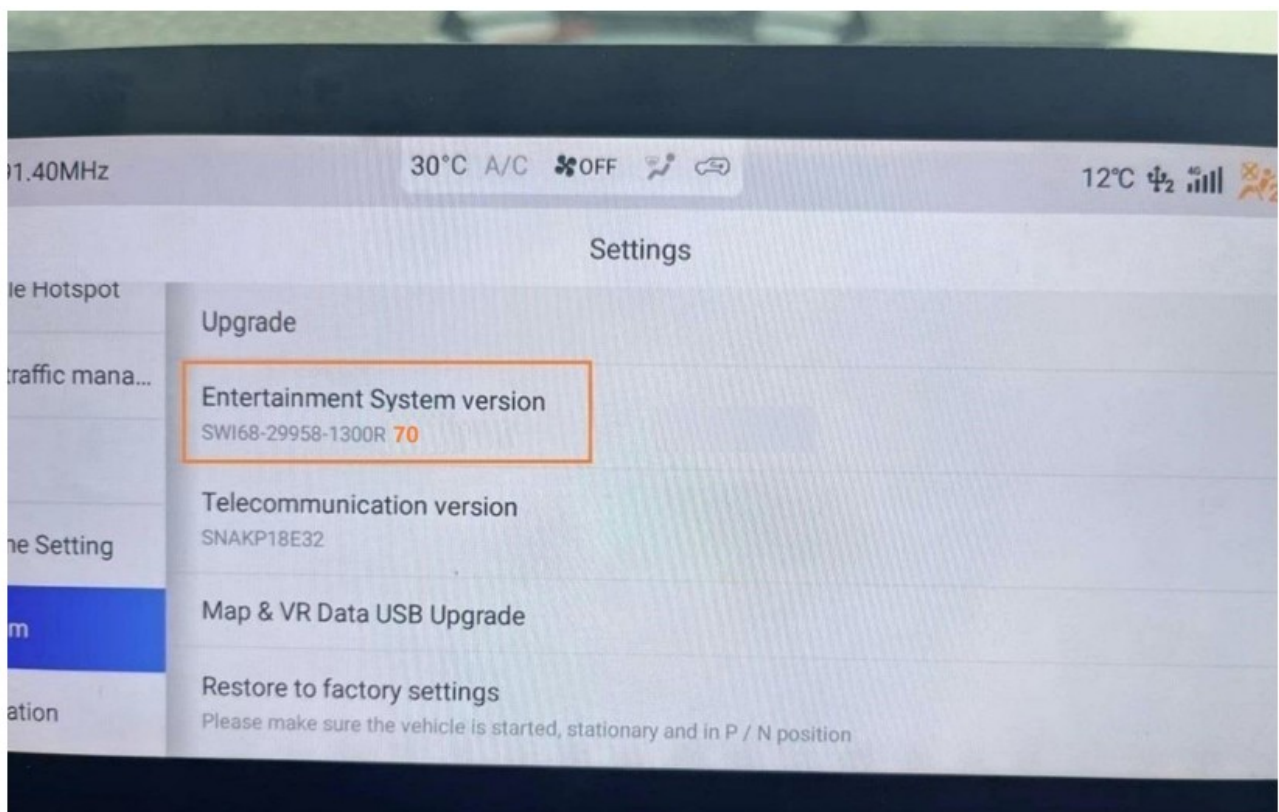
2.5 Check upgrade conditions and click upgrade



2.6 Once completed, confirm the restart



2.7 After restart, check R version in Settings – System



Section 3 – MCU upgrade

Versions up to R59 included the MCU in the archives similar to SWI69

From R63, MCU is no longer in the archives and needs to be updated using SIPS

Release version	MCU version
R70	68.5.2.0
R67	68.4.9.0
R63	68.4.7.0
R59	68.4.3.0